



FuelcoTM
complete fuel storage solutions



SPEC SHEET

**Kommander Tanks
LTKO 75**

Kommander – LTKO 75

Standard Tanks Features:

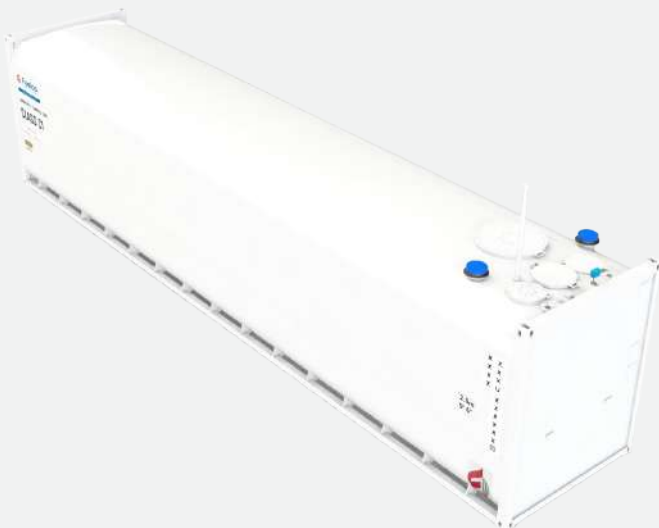
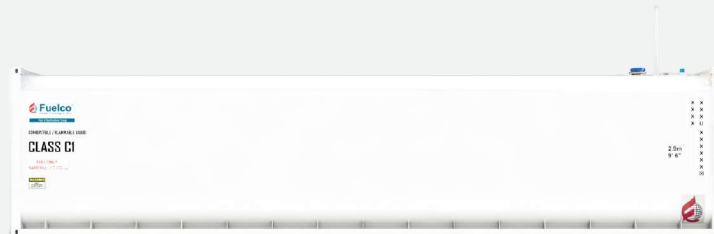


Self bunded double wall design with

- Fluid level dipstick for tank and interstitial space
- UL compliant emergency relief vents on the main tank and interstitial space
- Vent stack with screened rainproof outlet
- Suction foot valve, overfill protection and electronic overfill alarm
- Corner container lock castings for ease of transport
- **Access manway**
- **Warranty - 5 years** structural, 1 year on valves (conditions apply)

Options include

- Inspection ladder
- Clip-on pump bay
- Dispensing and fuel management



Specification	Details
Tank Model	LTKO 75
Gross Fill	75,673 litres
SFL	71,500 litres
Length	12192 mm
Width	2438 mm
Height	2896 mm
Empty Weight	9,455 kg
Vent Pipe	Standard
Fluid Level Dipstick	Standard
Compliance	AS1940, AS1692, AS1657, UL142, ULCS601, CSC

Disclaimer: Information and photographs shown are for marketing purposes only. Actual product may vary to images shown due to continual improvement processes, design changes and optional extras.

Contact details:

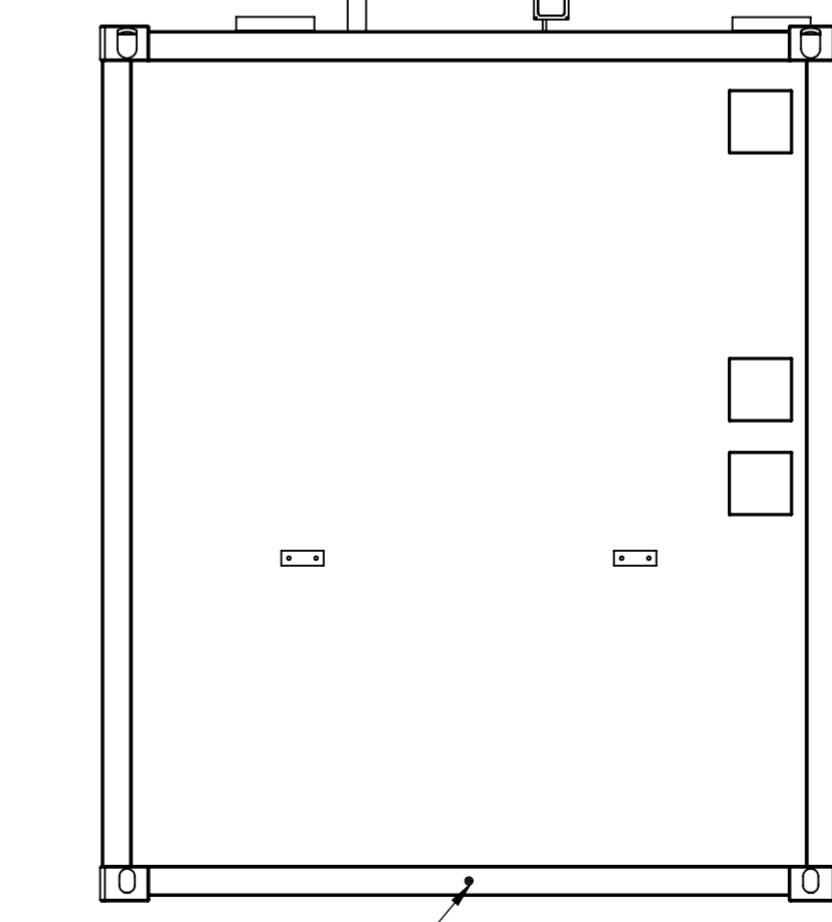
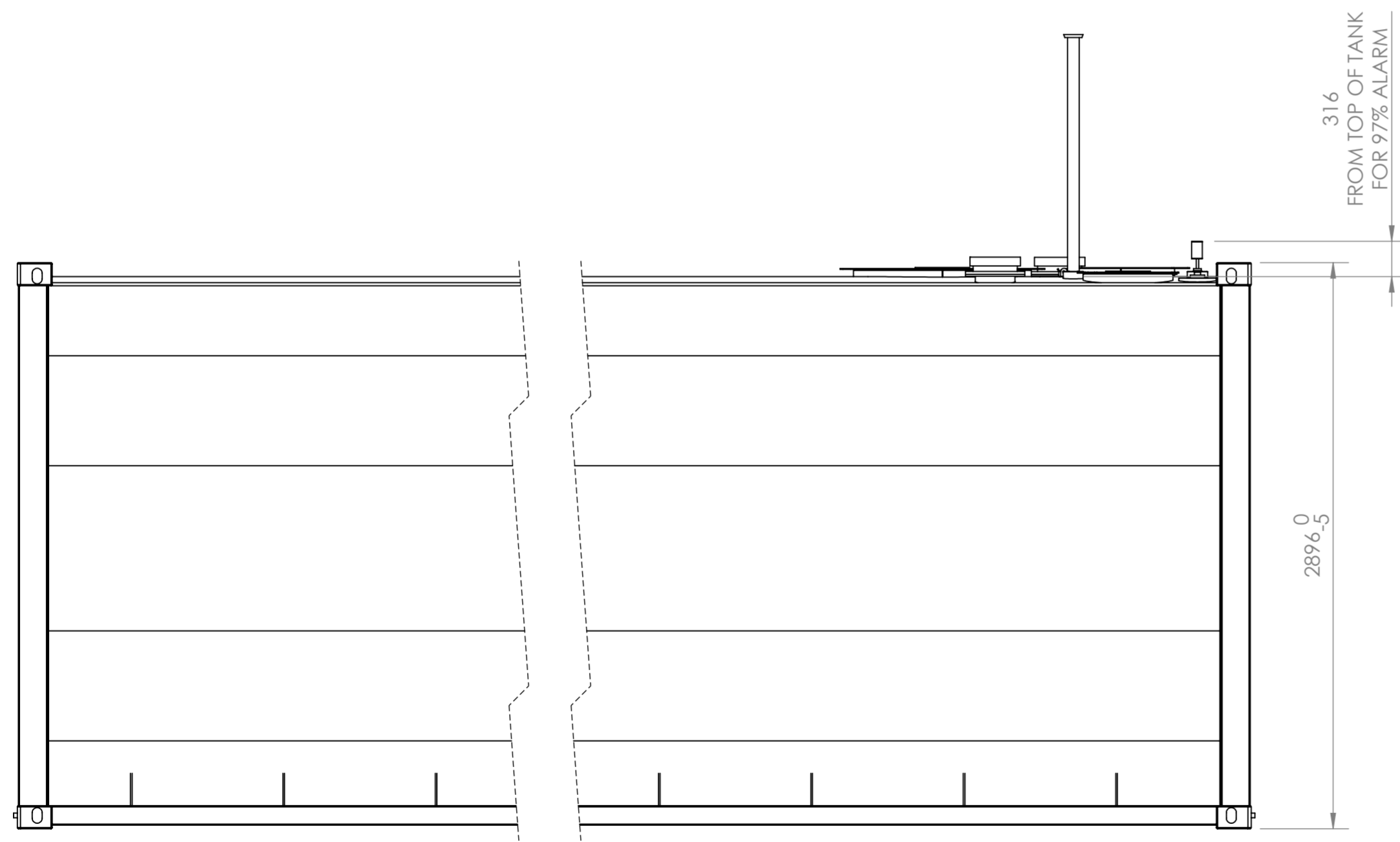
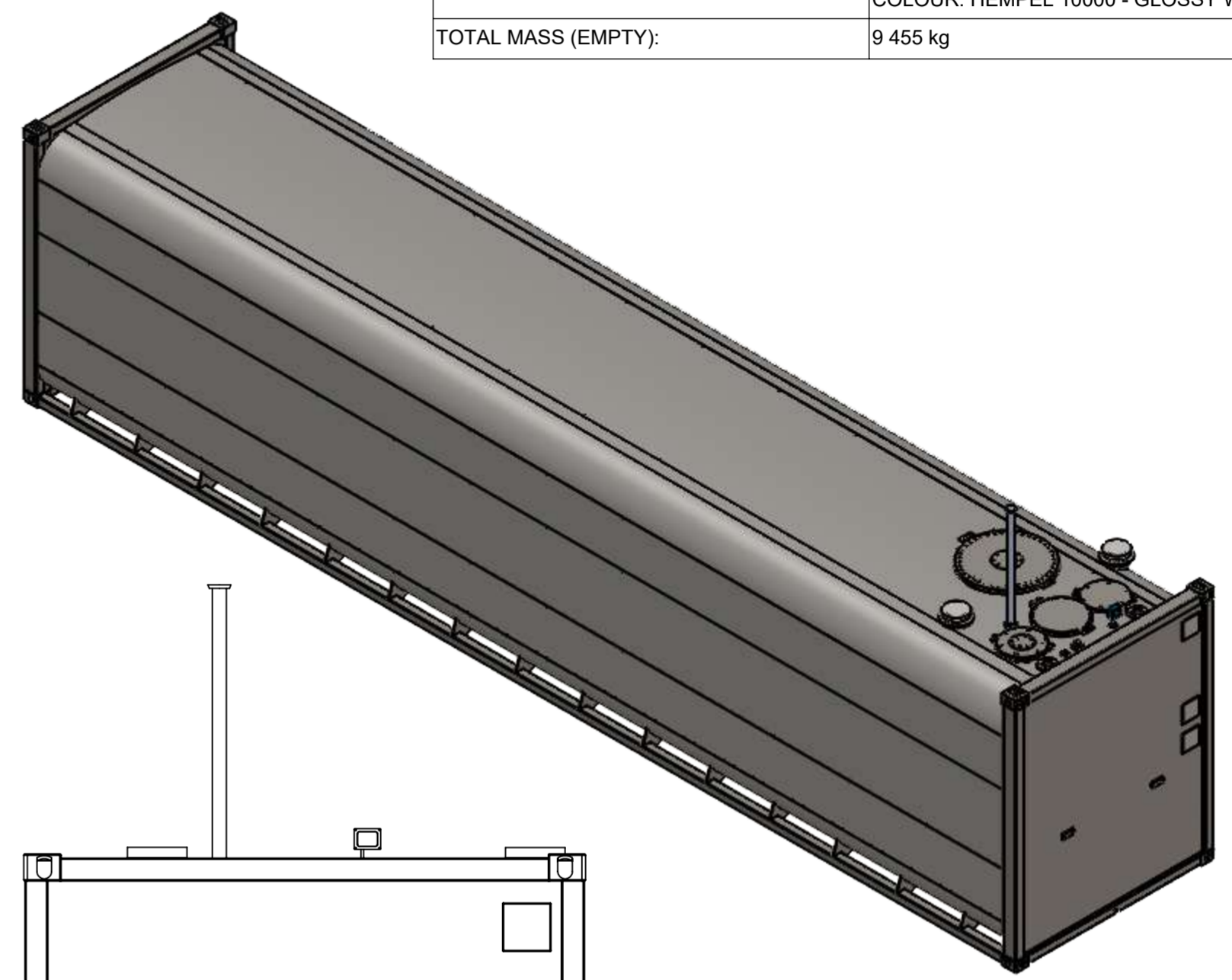
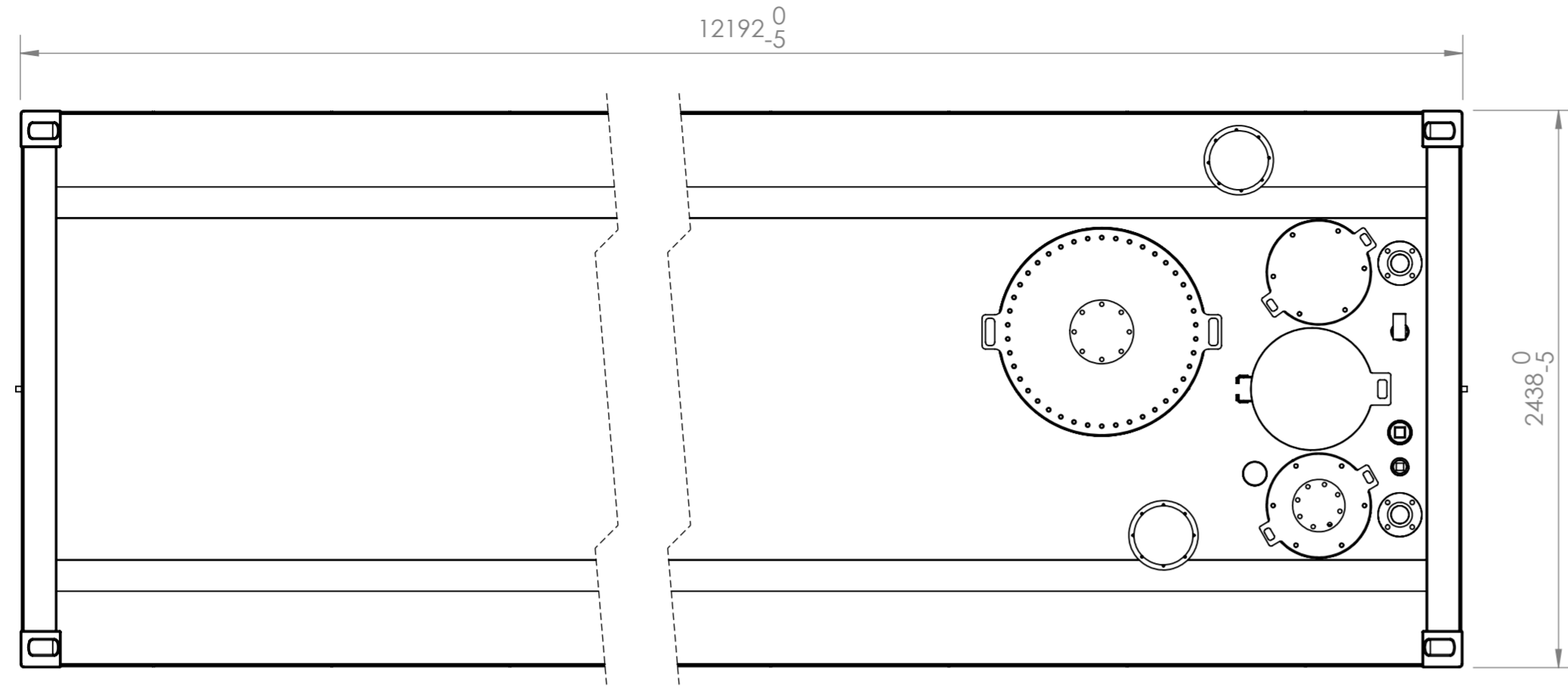
- +61 (03) 9775 1366
- sales@fuelco.com.au
- fuelco.com.au

Request a Quote Today

Fuelco holds stock of these tanks in ALL states across Australia. For details on availability and pricing, please contact your local state manager.




TANK DATA	
DESIGNED TO:	AS1692, AS1940, UL142, ULC S601, CSC
BUILT TO:	AS1692, UL142, ULC S601, CSC
TESTED TO:	UL142, CSC
OUTER / INNER WALL THICKNESS:	5mm / 5mm
GROSS VOLUME:	75 673L; 19 991 US gal
SAFE FILL LEVEL (VOLUME):	71 500L; 18 888 US gal (95%)
LEAK TEST PRESSURE:	21-35 kPa; 3-5 psi
PAINT SPECIFICATION:	HEMPEL PAINT 1st: HEMPADUR ZINC 17360: 50 µm 2nd: HEMPADUR FAST DRY 15560: 100 µm 3rd: HEMPATHANE HS 55610: 50 µm COLOUR: HEMPEL 10000 - GLOSSY WHITE
TOTAL MASS (EMPTY):	9 455 kg



EARTHING LUG TYP
BOTH ENDS M10

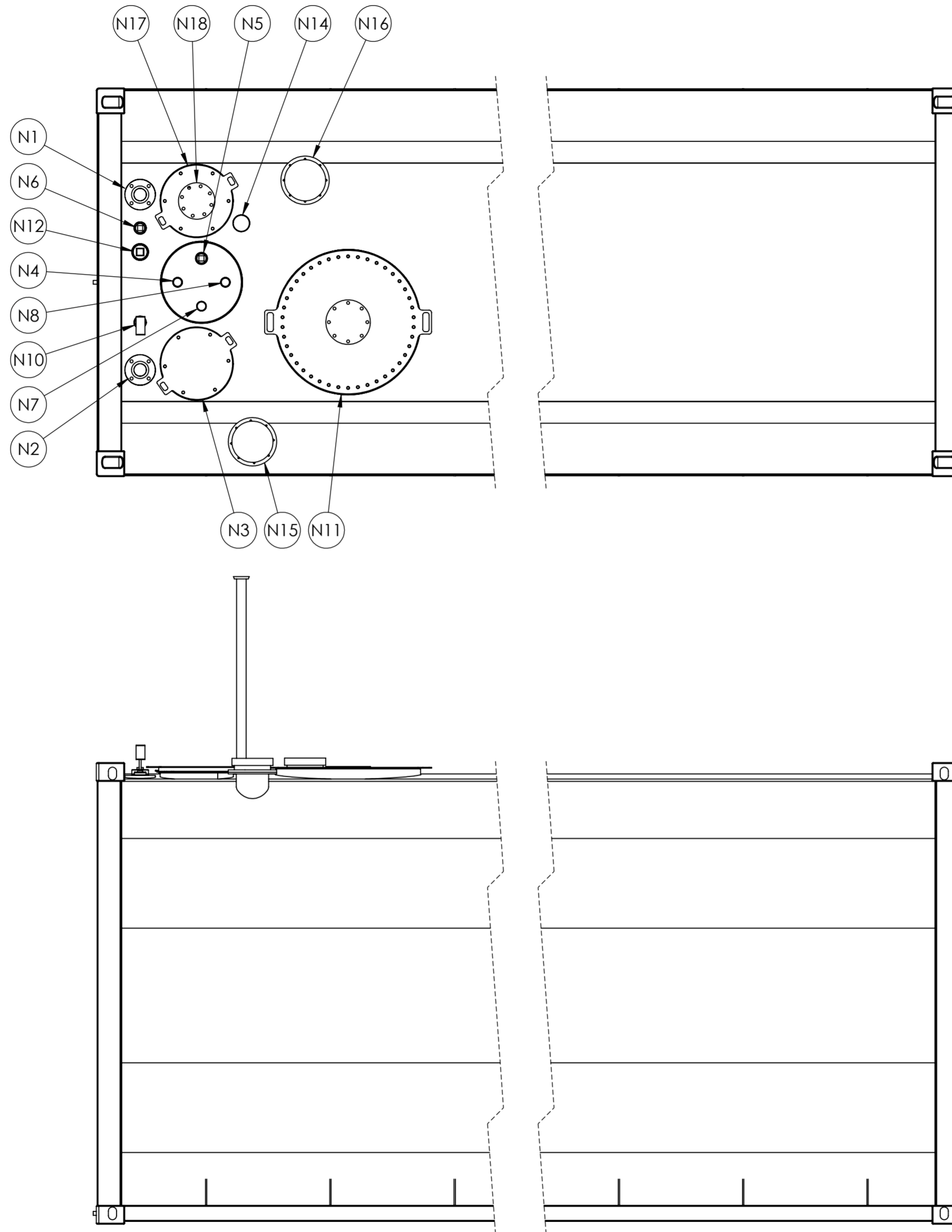
**IF IN DOUBT ASK.
DRAWING INFORMATION TAKES PRECEDENCE OVER PARTS LIST**

 <p>complete fuel storage solutions</p> <p>Part of the Eredyne Group</p> <p><small>COPYRIGHT: This drawing and the information herein is the property of Fuelco PTY LTD and must not be reproduced, transmitted or disclosed to other parties without written permission from the owners.</small></p>	<p>GENERAL NOTES</p> <p>DO NOT SCALE</p> <p>UNLESS STATED OTHERWISE:-</p> <p>ALL DIMENSIONS IN MILLIMETERS</p> <p>ALL THREADS ARE METRIC COARSE</p> <p>DEBURR & REMOVE ALL SHARP EDGES</p> <p>TOLERANCES:</p> <table border="1"> <tr> <th>TYPE</th> <th>TOLERANCE</th> </tr> <tr> <td>GENERAL</td> <td>±5.0</td> </tr> <tr> <td>ONE DECIMAL PLACE</td> <td>±0.1</td> </tr> <tr> <td>TWO DECIMAL PLACE</td> <td>±0.1</td> </tr> <tr> <td>ANGULAR (°)</td> <td>±1.0</td> </tr> </table>	TYPE	TOLERANCE	GENERAL	±5.0	ONE DECIMAL PLACE	±0.1	TWO DECIMAL PLACE	±0.1	ANGULAR (°)	±1.0	<table border="1"> <tr> <td>SCALE</td> <td>NTS</td> <td>TITLE</td> </tr> <tr> <td>DWN</td> <td>MB</td> <td>06/4/2020</td> </tr> <tr> <td>CLIENT</td> <td></td> <td></td> </tr> <tr> <td>END USER</td> <td></td> <td></td> </tr> </table>	SCALE	NTS	TITLE	DWN	MB	06/4/2020	CLIENT			END USER			<p>LTKO75 KOMMANDER BULK TANK GENERAL ARRANGEMENT STANDARD CONFIGURATION SHEET 1 OF 2</p> <p>DRAWING NUMBER LTKO75-GA-00</p>	<p>REV A</p>
	TYPE	TOLERANCE																								
GENERAL	±5.0																									
ONE DECIMAL PLACE	±0.1																									
TWO DECIMAL PLACE	±0.1																									
ANGULAR (°)	±1.0																									
SCALE	NTS	TITLE																								
DWN	MB	06/4/2020																								
CLIENT																										
END USER																										

A	ISSUED FOR INFORMATION	7/25/2023	RVD	HS
REV.	DESCRIPTION	DATE	DWN	APP

REVISIONS

E:\Eredyne Group Dropbox\Lionel



NOZZLE NO.	SIZE	CONNECTION TYPE	DESCRIPTION
N1	DN80	ASME CLASS 150 FLANGE	SUCTION C/W DN80 PIPE TO FLOOR & FOOT VALVE
N2	DN80	ASME CLASS 150 FLANGE	FILL PIPE C/W DN80 PIPE TO FLOOR, OVERFILL PROTECTION VALVE, CHECK VALVE, BALL VALVE AND CAMLOCK
N3	350	INSPECTION HATCH	INSPECTION HATCH WITH ACCESS TO OVER FILL PROTECTION VALVE
N4	DN50	BSP-F x 50 LONG	SPARE
N5	DN50	BSP-F x 50 LONG	SPARE
N6	DN50	BSP-F x 50 LONG	SPARE / GAUGE
N7	DN50	BSP-M x 35 LONG	PRIMARY TANK DIP C/W DN50 PIPE TO FLOOR & LOCKABLE DIP CAP
N8	DN50	BSP-M x 35 LONG	INTERSTITIAL SPACE DIP C/W DN50 PIPE THROUGH INTERNAL FLOOR & LOCKABLE DIP CAP
N9			NOT USED
N10	DN50	BSP-F x 50 LONG	C/W OVERFILL WARNING ALARM
N11	600	MANWAY	MANWAY C/W LADDER ACCESS TO TANK INTERNAL
N12	DN80	BSP-F x 75 LONG	SPARE / GAUGE
N13			NOT USED
N14	DN80	BSP-F x 35 LONG	FREE VENT C/W RISER & VENT CAP SUPPLIED LOOSE
N15	DN200	ASME CLASS 150 FLANGE	INTERSTITIAL SPACE EMERGENCY VENT C/W DN200 PIPE CONNECTED THROUGH INTERNAL SKIN
N16	DN200	ASME CLASS 150 FLANGE	PRIMARY EMERGENCY VENT
N17	350	INSPECTION HATCH	INSPECTION HATCH WITH ACCESS TO FOOT VALVE
N18	DN150	ASME CLASS 150 FLANGE	SPARE / SUBMERSIBLE PUMP

BSP-F: BSP FEMALE THREAD
BSP-M: BSP MALE THREAD

**IF IN DOUBT ASK.
DRAWING INFORMATION TAKES PRECEDENCE OVER PARTS LIST**

<p>complete fuel storage solutions</p> <p>Part of the Eredyne Group</p> <p><small>COPYRIGHT: This drawing and the information herein is the property of Fuelco PTY LTD and must not be reproduced, transferred or disclosed to other parties without written permission from the owners.</small></p>	<p>GENERAL NOTES DO NOT SCALE UNLESS STATED OTHERWISE:- ALL DIMENSIONS IN MILLIMETERS ALL THREADS ARE METRIC COARSE DEBURR & REMOVE ALL SHARP EDGES TOLERANCES:</p> <table border="1"> <tr> <th>TYPE</th> <th>TOLERANCE</th> </tr> <tr> <td>GENERAL</td> <td>±5.0</td> </tr> <tr> <td>ONE DECIMAL PLACE</td> <td>±0.1</td> </tr> <tr> <td>TWO DECIMAL PLACE</td> <td>±0.1</td> </tr> <tr> <td>ANGULAR (°)</td> <td>±1.0</td> </tr> </table>	TYPE	TOLERANCE	GENERAL	±5.0	ONE DECIMAL PLACE	±0.1	TWO DECIMAL PLACE	±0.1	ANGULAR (°)	±1.0	<p>SCALE NTS</p> <p>DWN MB 06/4/2020</p>	<p>TITLE</p> <p>LTKO75 KOMMANDER BULK TANK GENERAL ARRANGEMENT STANDARD CONFIGURATION SHEET 2 OF 2</p>
		TYPE	TOLERANCE										
GENERAL	±5.0												
ONE DECIMAL PLACE	±0.1												
TWO DECIMAL PLACE	±0.1												
ANGULAR (°)	±1.0												
<p>CLIENT</p>	<p>END USER</p>	<p>DRAWING NUMBER</p> <p>LTKO75-GA-00</p>	<p>REV</p> <p>A</p>										

E:\Eredyne Group Dropbox\Lionel