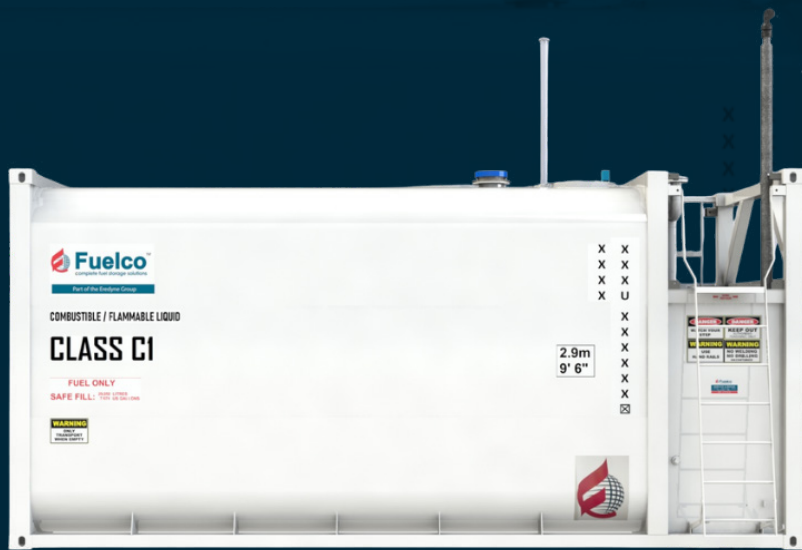




FuelcoTM
complete fuel storage solutions



SPEC SHEET

**Kommander Tanks
LTKO 30**

Kommander – LTKO 30

Standard Tanks Features:



Self bunded double wall design with

- Fluid level dipsticks for tank and interstitial space
- UL compliant emergency relief vents on the main tank and interstitial space
- Vent stack with screened rainproof outlet
- Suction foot valve, overfill protection and electronic overfill alarm
- Corner container lock castings for ease of transport
- Access manway
- Warranty - 5 years structural, 1 year on valves

Pump bay model standard with:

- Bunded pump bay with lockable weatherproof doors (roller shutter door optional)
- Galvanised access ladder and platform; with ladder fitted to either side of the platform (ex-factory)
- Galvanised kick plate and middle rail provided for additional safety of users



Specification	Details
Tank Model	LTKO 30
Gross Fill	30,894 litres
SFL	29,350 litres
Length	6058 mm
Width	2438 mm
Height	2896 mm
Empty Weight	6,882 kg
Vent Pipe	Standard
Fluid Level Dipstick	Standard
Compliance	AS1940, AS1692, AS1657, UL142, ULCS601, CSC

Disclaimer: Information and photographs shown are for marketing purposes only. Actual product may vary to images shown due to continual improvement processes, design changes and optional extras.

Contact details:

+61 (03) 9775 1366
 sales@fuelco.com.au
 fuelco.com.au

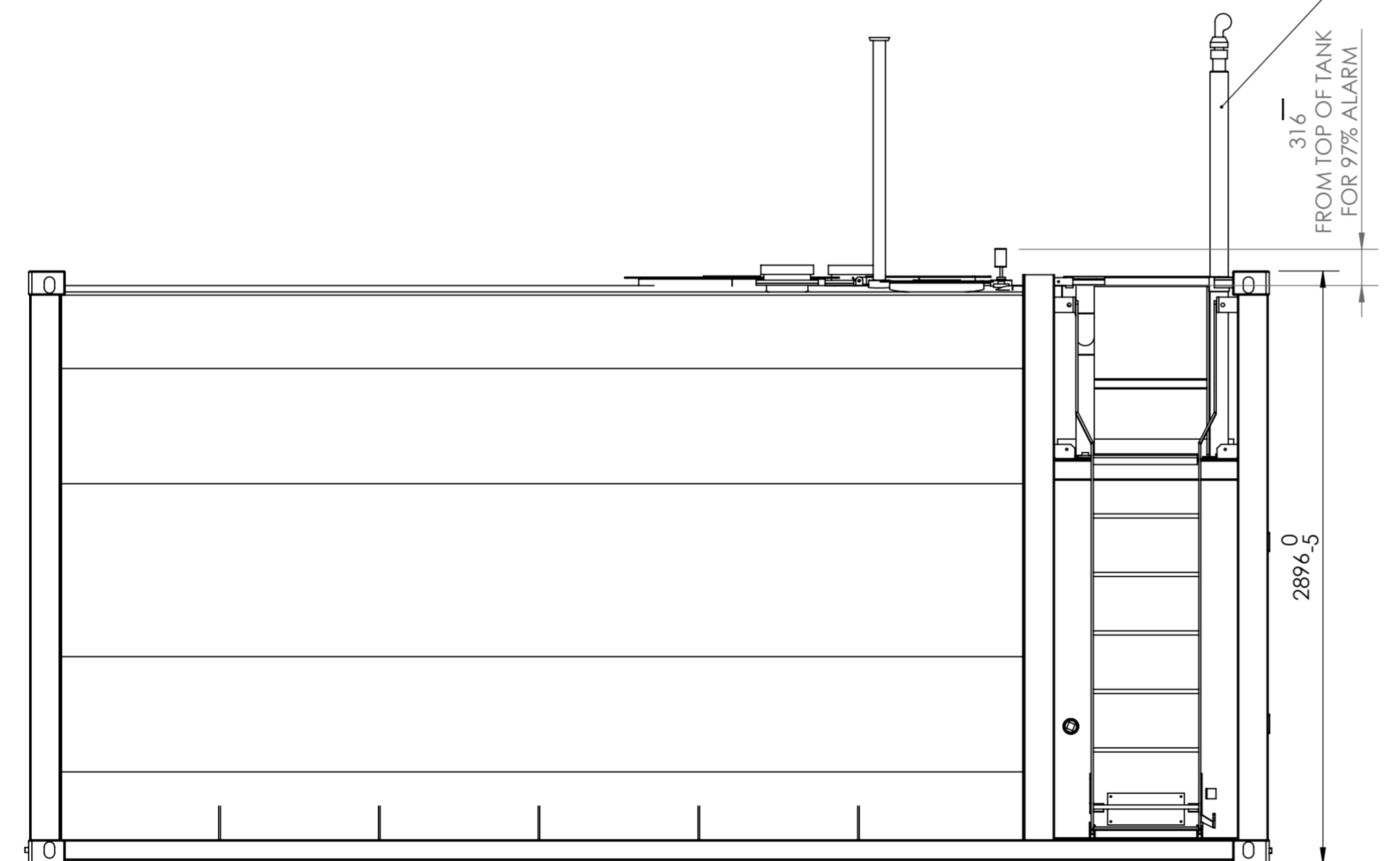
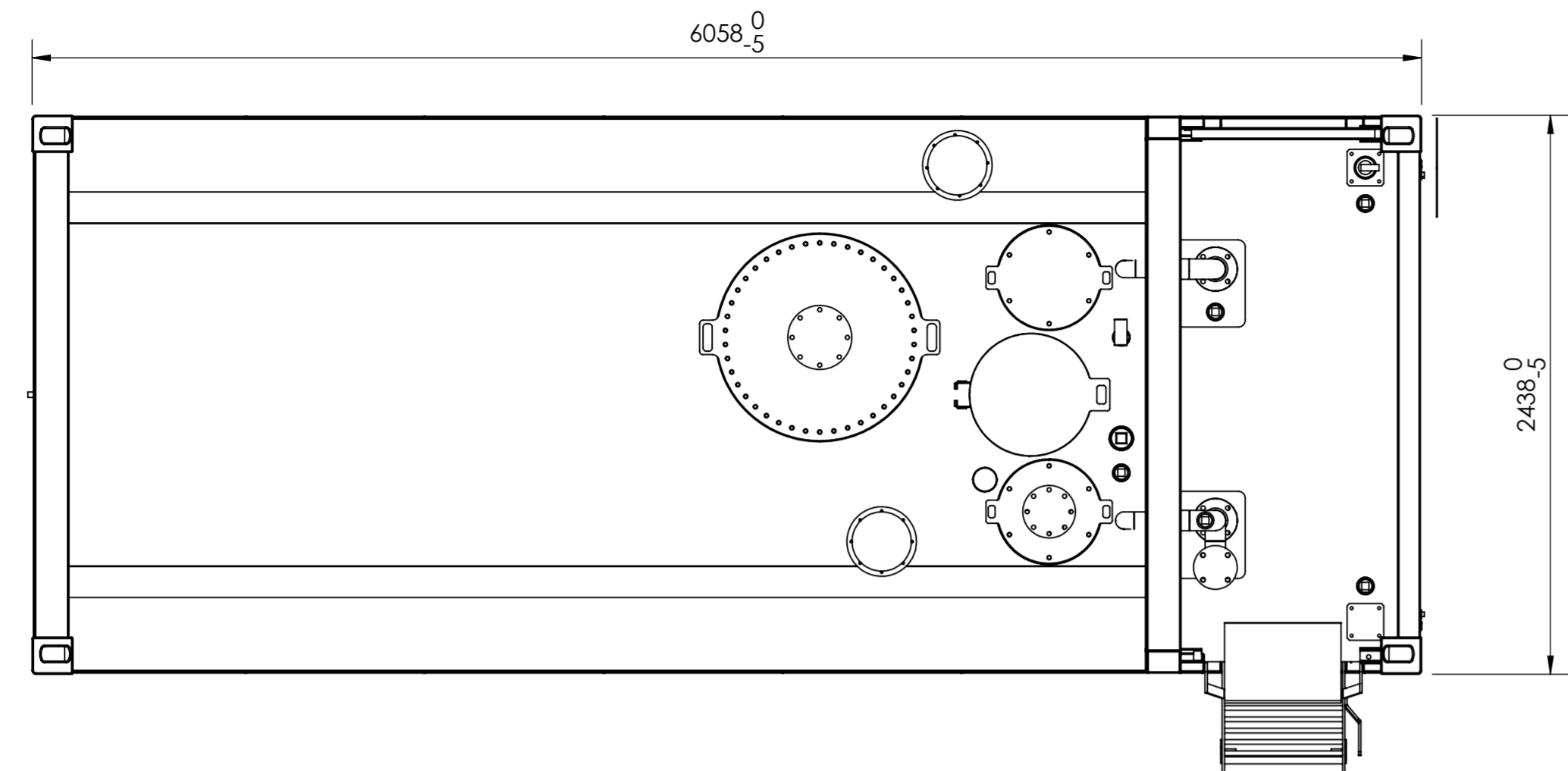
Request a Quote Today

Fuelco holds stock of these tanks in ALL states across Australia. For details on availability and pricing, please contact your local state manager.



12 11 10 9 8 7 6 5 4 3 2 1

TANK DATA	
DESIGNED TO:	AS1692, AS1940, UL142, ULC S601, CSC
BUILT TO:	AS1692, UL142, ULC S601, CSC
TESTED TO:	UL142, CSC
OUTER / INNER WALL THICKNESS:	5mm / 5mm
GROSS VOLUME:	30 894L; 8 161 US gal
SAFE FILL LEVEL (VOLUME):	29 350L; 7 753 US gal (95%)
LEAK TEST PRESSURE:	21-35 kPa; 3-5 psi
PAINT SPECIFICATION:	HEMPEL PAINT 1st: HEMPADUR ZINC 17360: 50 µm 2nd: HEMPADUR FAST DRY 15560: 100 µm 3rd: HEMPATHANE HS 55610: 50 µm COLOUR: HEMPEL 10000 - GLOSSY WHITE
TOTAL MASS (EMPTY):	6 882 kg

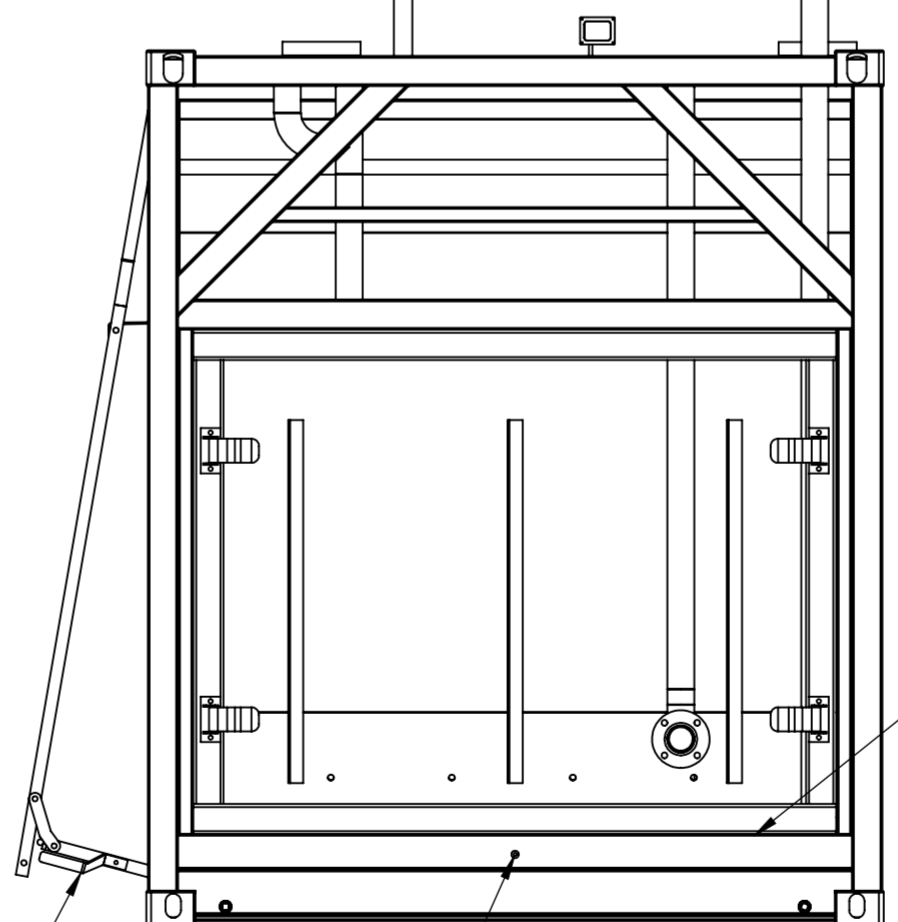
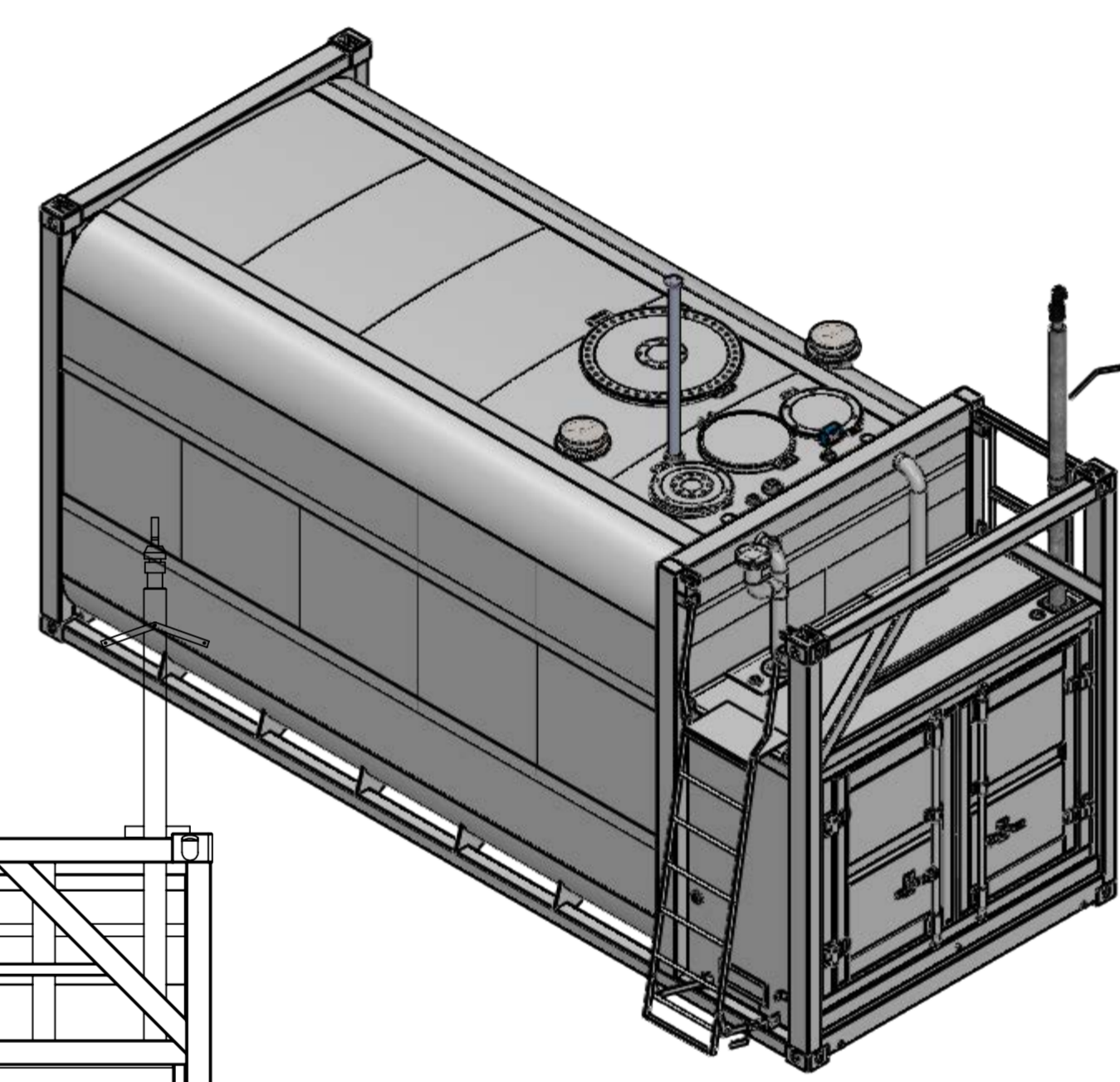


SINGLE HOSE MAST SUPPLIED AS STANDARD, CAN BE FITTED ON EITHER SIDE OF PUMPBAY

316 FROM TOP OF TANK FOR 97% ALARM

2896.5

1 x AS1657 ACCESS LADDER SUPPLIED, CAN BE FITTED TO BOTH SIDES OF TANK HAND RAIL INSERT PROVIDED FOR OPPOSITE SIDE



FLOOR GRATING FITTED FOR EASE OF ACCESS

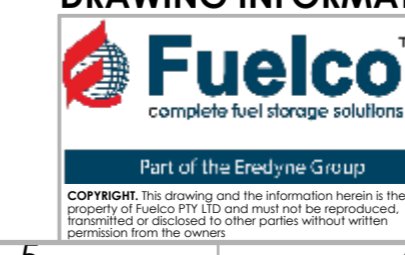
EARTHING LUG TYP BOTH ENDS M10

LOCKABLE DOORS - HIDDEN FOR CLARITY

REV.	DESCRIPTION	DATE	DWN	APP
2	RE-ISSUED FOR INFORMATION	13/11/2024	LIB	HS
1	RE-ISSUED FOR INFORMATION	01/08/2024	LIB	HS
0	ISSUED FOR INFORMATION	24/7/2023	RVD	HS

REVISIONS

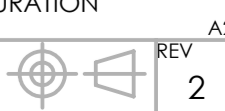
IF IN DOUBT ASK. DRAWING INFORMATION TAKES PRECEDENCE OVER PARTS LIST



GENERAL NOTES
DO NOT SCALE
UNLESS STATED OTHERWISE:-
ALL DIMENSIONS IN MILLIMETERS
ALL THREADS ARE METRIC COARSE
DEBURR & REMOVE ALL SHARP EDGES
TOLERANCES:
TYPE TOLERANCE
GENERAL ±0.1
ONE DECIMAL PLACE ±0.1
TWO DECIMAL PLACE ±0.1
ANGULAR (°) ±1.0

SCALE	NTS	TITLE
DWN	RVD	24/7/2023
CLIENT		
END USER		

DRAWING NUMBER	REV
LTKO30-GA-00	2

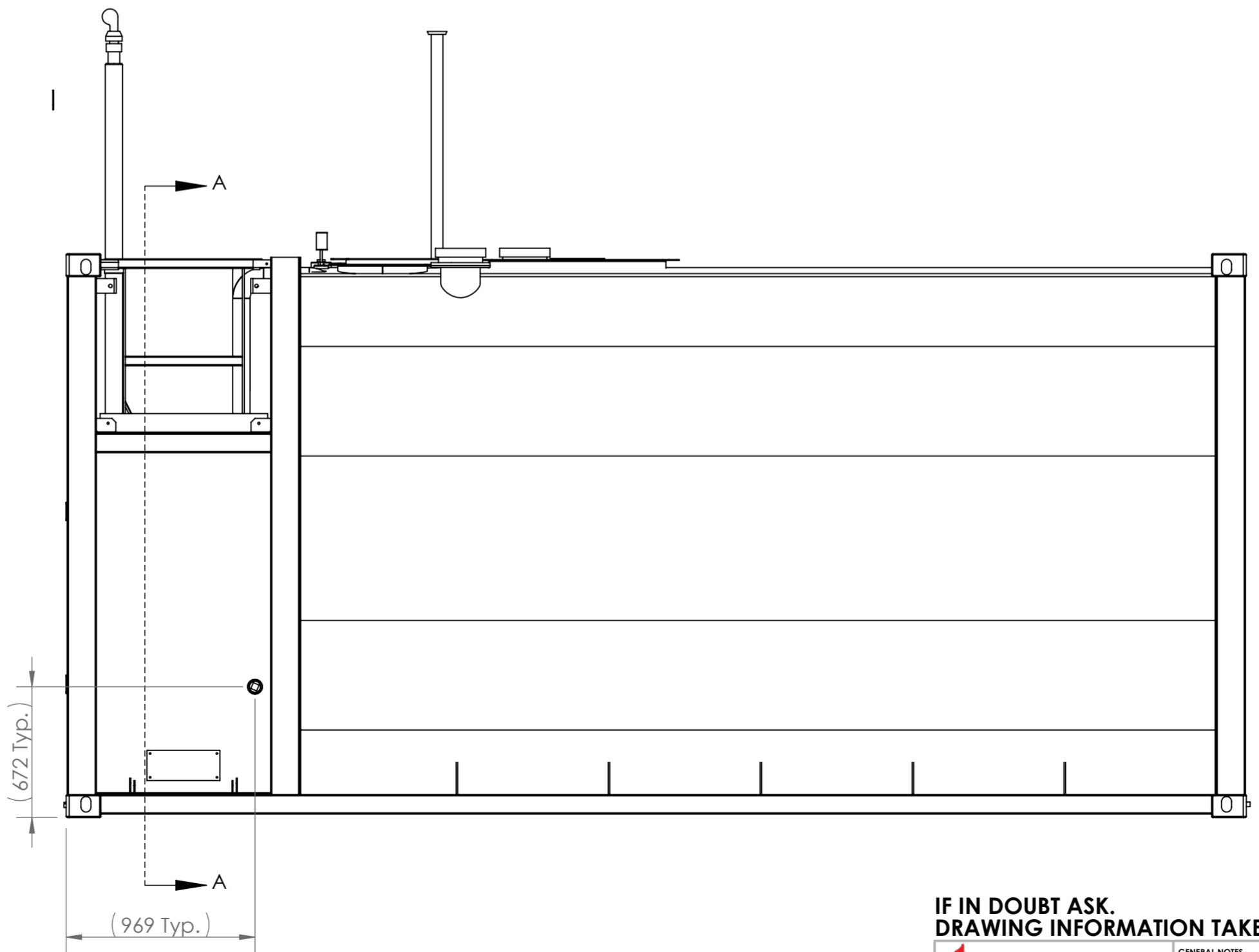
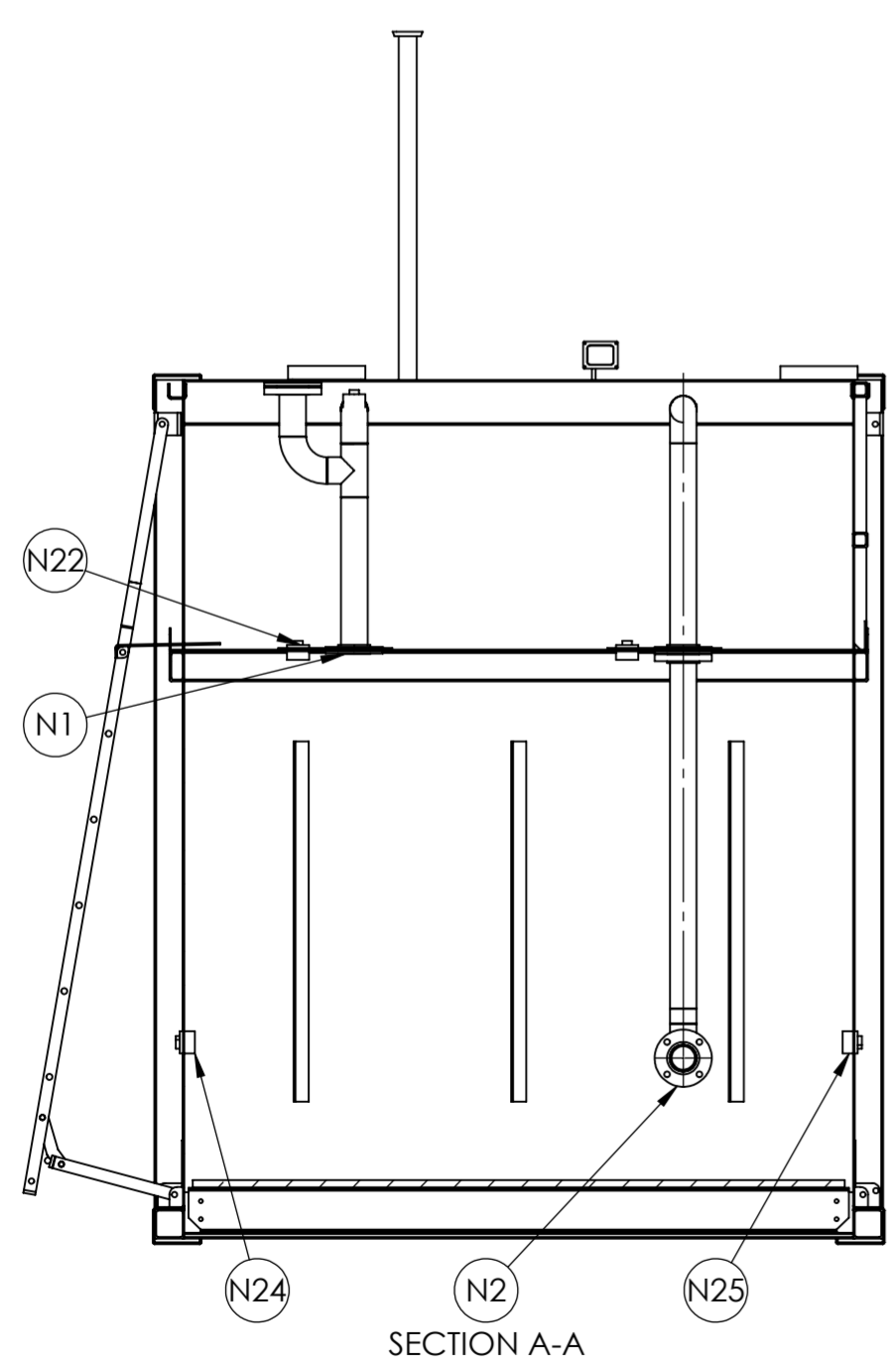
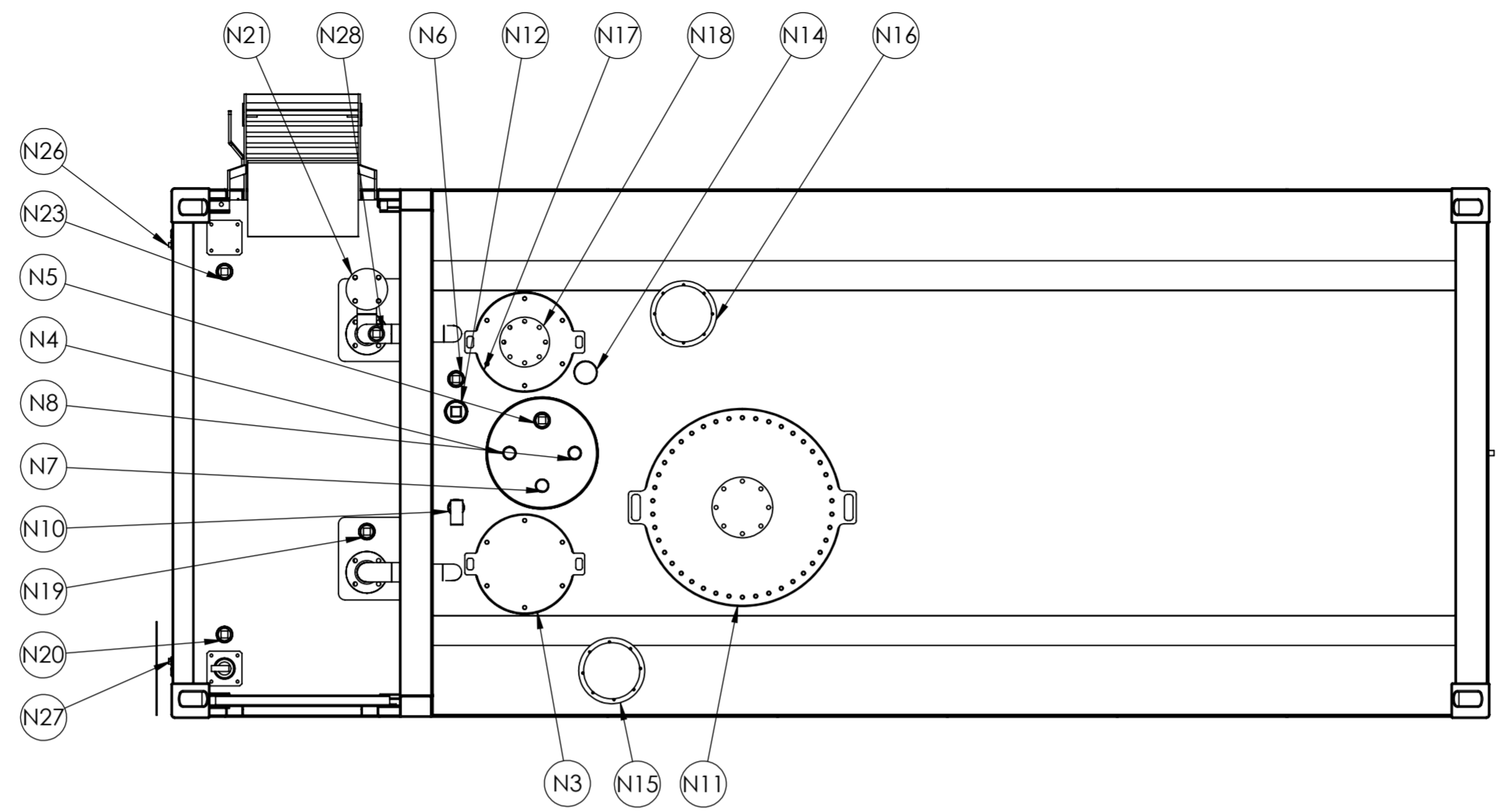


12 11 10 9 8 7 6 5 4 3 2 1

E:\Eredyne Group Dropbox\Lionel

NOZZLE NO.	SIZE	CONNECTION TYPE	DESCRIPTION
N1	DN80	ASME CLASS 150 FLANGE	SUCTION C/W DN80 PIPE TO FLOOR & FOOT VALVE
N2	DN80	ASME CLASS 150 FLANGE	FILL PIPE C/W DN80 PIPE TO FLOOR, OVERFILL PROTECTION VALVE, CHECK VALVE, BALL VALVE AND CAMLOCK
N3	350	INSPECTION HATCH	INSPECTION HATCH WITH ACCESS TO OVER FILL PROTECTION VALVE
N4	DN50	BSP-F x 50 LONG	SPARE
N5	DN50	BSP-F x 50 LONG	SPARE
N6	DN50	BSP-F x 50 LONG	SPARE / GAUGE
N7	DN50	BSP-M x 35 LONG	PRIMARY TANK DIP C/W DN50 PIPE TO FLOOR & LOCKABLE DIP CAP
N8	DN50	BSP-M x 35 LONG	INTERSTITIAL SPACE DIP C/W DN50 PIPE THROUGH INTERNAL FLOOR & LOCKABLE DIP CAP
N9			NOT USED
N10	DN50	BSP-F x 50 LONG	C/W OVERFILL WARNING ALARM
N11	600	MANWAY	MANWAY C/W LADDER ACCESS TO TANK INTERNAL
N12	DN80	BSP-F x 75 LONG	SPARE / GAUGE
N13			NOT USED
N14	DN80	BSP-F x 35 LONG	FREE VENT C/W RISER & VENT CAP SUPPLIED LOOSE
N15	DN200	ASME CLASS 150 FLANGE	INTERSTITIAL SPACE EMERGENCY VENT C/W DN200 PIPE CONNECTED THROUGH INTERNAL SKIN
N16	DN200	ASME CLASS 150 FLANGE	PRIMARY EMERGENCY VENT
N17	350	INSPECTION HATCH	INSPECTION HATCH WITH ACCESS TO FOOT VALVE
N18	DN150	ASME CLASS 150 FLANGE	SPARE / SUBMERSIBLE PUMP
N19	DN50	BSP-F x 50 LONG	SPARE (INTO PUMP BAY)
N20	DN50	BSP-F x 50 LONG	HIGH MAST DISPENSING
N21	DN80	ASME CLASS 150 FLANGE	SUCTION PRIMING PORT / SUBMERSIBLE PUMP CONNECTION
N22	DN50	BSP-F x 50 LONG	SPARE (INTO PUMP BAY) / SUB PUMP ELECTRICALS
N23	DN50	BSP-F x 50 LONG	HIGH MAST DISPENSING
N24	DN50	BSP-F x 50 LONG	SPARE (INTO PUMP BAY) / EXTERNAL ELECTRICALS
N25	DN50	BSP-F x 50 LONG	SPARE (INTO PUMP BAY) / EXTERNAL ELECTRICALS
N26	DN25	BSP-F x 45 LONG	PUMP BUND DRAIN
N27	DN25	BSP-F x 45 LONG	PUMP BUND DRAIN
N28	DN50	BSP-F x 50 LONG	PRIME POINT

BSP-F: BSP FEMALE THREAD
BSP-M: BSP MALE THREAD



IF IN DOUBT ASK. DRAWING INFORMATION TAKES PRECEDENCE OVER PARTS LIST

Fuelco
complete fuel storage solutions
Part of the Eredyne Group

GENERAL NOTES
DO NOT SCALE
UNLESS STATED OTHERWISE-
ALL DIMENSIONS IN MILLIMETERS
ALL THREADS ARE METRIC COARSE
DEBURR & REMOVE ALL SHARP EDGES
TOLERANCES:
TYPE TOLERANCE
GENERAL ONE DECIMAL PLACE ±0.0
TWO DECIMAL PLACE ±0.1
ANGULAR (°) ±1.0

SCALE	NTS	TITLE
DWN	RVD	24/7/2023
CUSTOMER		
END USER		

LTKO30 KOMMANDER BULK TANK GENERAL ARRANGEMENT STANDARD CONFIGURATION SHEET 2 OF 2		REV 2
DRAWING NUMBER	LTKO30-GA-00	