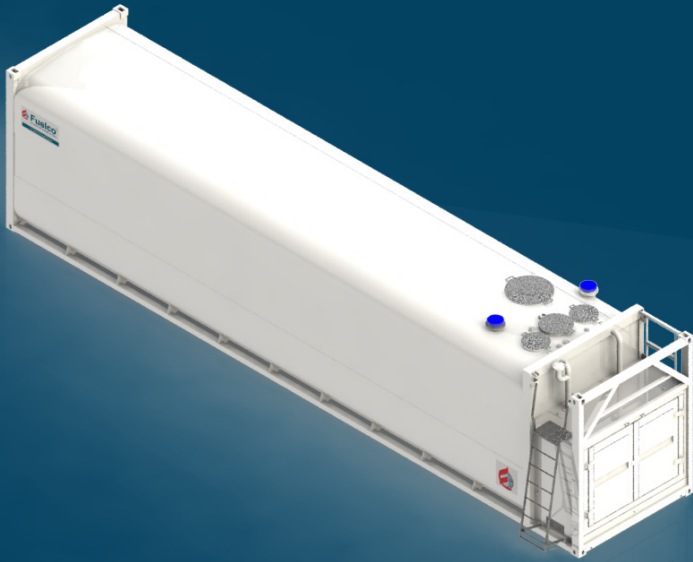




Kommander - LTKO 68



Self banded double wall design

- Fluid level dipsticks for tank and interstitial space
- UL compliant emergency relief vents on the main tank and interstitial space
- Vent stack with screened rainproof outlet
- Suction foot valve, overfill protection and electronic overfill alarm
- Corner container lock castings for ease of transport
- Access manway
- Warranty – 5 years structural, 1 year on valves; conditions apply

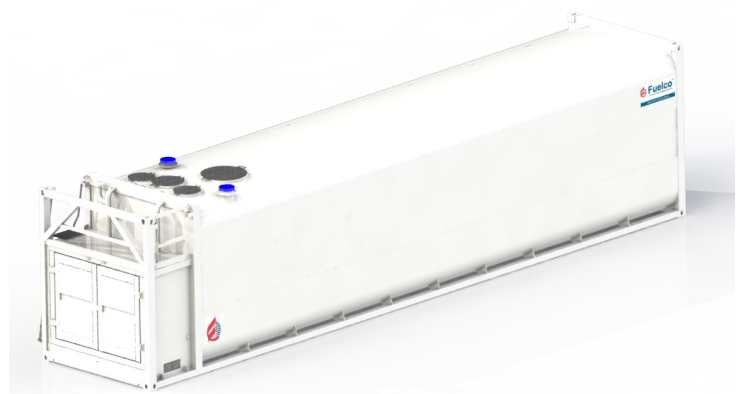
Pump bay model standard with:

- Bunded pump bay with lockable weatherproof doors (roller shutter door optional)
- Galvanised access ladder and platform; with ladder fitted to either side of the platform (ex-factory)
- Galvanised kick plate and middle rail provided for additional

Specifications

Description	
Safe Fill, litres	65,750
Length, mm	12,192
Width, mm	2,438
Height, mm	2,896
Weight (empty) kg	12,192
Vent Pipe	Standard
Fluid Level Dipstick	Standard
Compliance	AS1940, AS1692, AS1657, UL142, ULCS601

Tank features rounded corners designed to eliminate stress point for improved quality and greater longevity. Also designed for visibility across all external surfaces of the tank.



*Disclaimer: *Terms & Conditions apply. Information and photographs shown are for marketing purposes only. Actual product may vary to images shown due to continual improvement processes, design changes and optional extras*

CONTACT US:

+61 (03) 9775 1366 | sales@fuelco.com.au
 FUELCO.COM.AU

Fuelco holds stock of these tanks in ALL states across Australia. For details on availability and pricing, please contact your local state manager.