

UL2085 - Fire Rated Fuel Storage



- Fire Rated double-wall fire-protected aboveground storage tank
- Inner and outer steel tank with a unique lightweight thermal insulation material that exceeds the 2-hour fire test
- Insulating material is 75% lighter than concrete, reducing shipping, installation and relocation costs
- Compatible with a wide range of Fuels and Chemicals, Including Biodiesel and Ethanol
- AS1692, UL142, ULC S601, UL2085, CSC

Tank Features

- UL 2085 Listed “Protected” tank
- Ballistics and Impact protection per UL 2085
- Both the inner and outer steel tanks are built to UL standards
- Dual compartment tank can be used for multiple products eg. diesel, gasoline etc
- Tank constructed with thermal insulation material on all sides that fully surrounds the product
- Insulates product in tank from ambient temperature variations, reducing emissions to the environment
- Steel outer wall provides low cost maintenance and protection from weathering
- Primary storage tank and secondary containment compatible with a wide range of fuels and chemicals, including biodiesel and ethanol
- Interstitial space can be monitored for leak detection

Additional Features

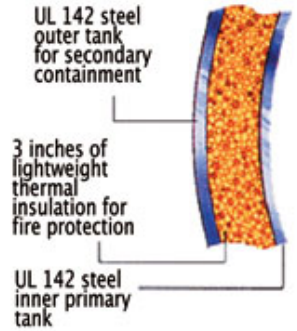
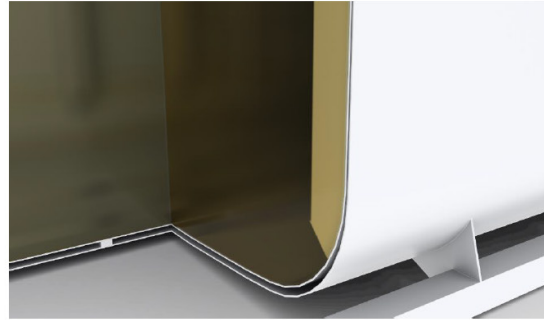
- Steel Construction | Customisation as required | Built to Internationally recognised Standards with strict third party quality control inspection program

AUSTRALIA
+61 3 9775 1366
FUELCO.COM.AU

AFRICA
+27 (016) 421 8043
FUELCO-SA.COM

MENA
+971 4 232 6985
FUELCO.AE

UL2085 - Fire Rated Fuel Storage



To meet UL2085 the requirement is for 3 inches or 75mm of insulation on all faces of the tank, including the roof and floor. This is sandwiched between the inner and outer skins.

Specifications

Tank Model	Description	Hours	Gross fill litres	Safe fill litres	Length mm	Width mm	Height mm
LTKUB1	Cube	4 hrs	1,050L 277 US gal	998L 263 US gal	2,095	1,040	1,530
LTKUB2	Cube	4 hrs	2,170L 573 US gal	2,000L 528 US gal	2,200	1,674	1,530
LTKUB3	Cube	4 hrs	3,250L 858 US gal	3,087L 816 US gal	2,200	1,753	1,530
LTKUB5	Cube	2 hrs	5,250L 1,387 US gal	4,987L 1,317 US gal	2,723	2,200	1,530
LTKUB10	Cube	2 hrs	10,700L 2,827 US gal	10,000L 2,642 US gal	5,223	2,200	1,530
LTKOB10	10ft Single Pumpbay	2 hrs	8,500L 2,245 US gal	8,075L 2,135 US gal	2,991	2,438	2,896
LTKOB15	10ft No Pumpbay	2 hrs	14,292L 3,776 US gal	13,500L 3,566 US gal	2,991	2,438	2,896
LTKOB27	20ft Single Pumpbay	2 hrs	25,467L 6,728 US gal	24,100L 6,367 US gal	6,058	2,438	2,896
LTKOB32	20ft No Pumpbay	2 hrs	31,230L 8,250 US gal	29,600L 7,819 US gal	6,058	2,438	2,896
LTKOB55	40ft Single, Extra-Long Pumpbay	2 hrs	55,000L 14,530 US gal	52,250L 13,803 US gal	12,192	2,438	2,896
LTKOB60	40ft Single Pumpbay	2 hrs	59,297L 16,665 US gal	56,330L 14,881 US gal	12,192	2,438	2,896
LTKOB65	40ft No Pumpbay	2 hrs	65,100L 17,198 US gal	61,800L 16,326 US gal	12,192	2,438	2,896

AUSTRALIA
+61 3 9775 1366
FUELCO.COM.AU

AFRICA
+27 (016) 421 8043
FUELCO-SA.COM

MENA
+971 4 232 6985
FUELCO.AE